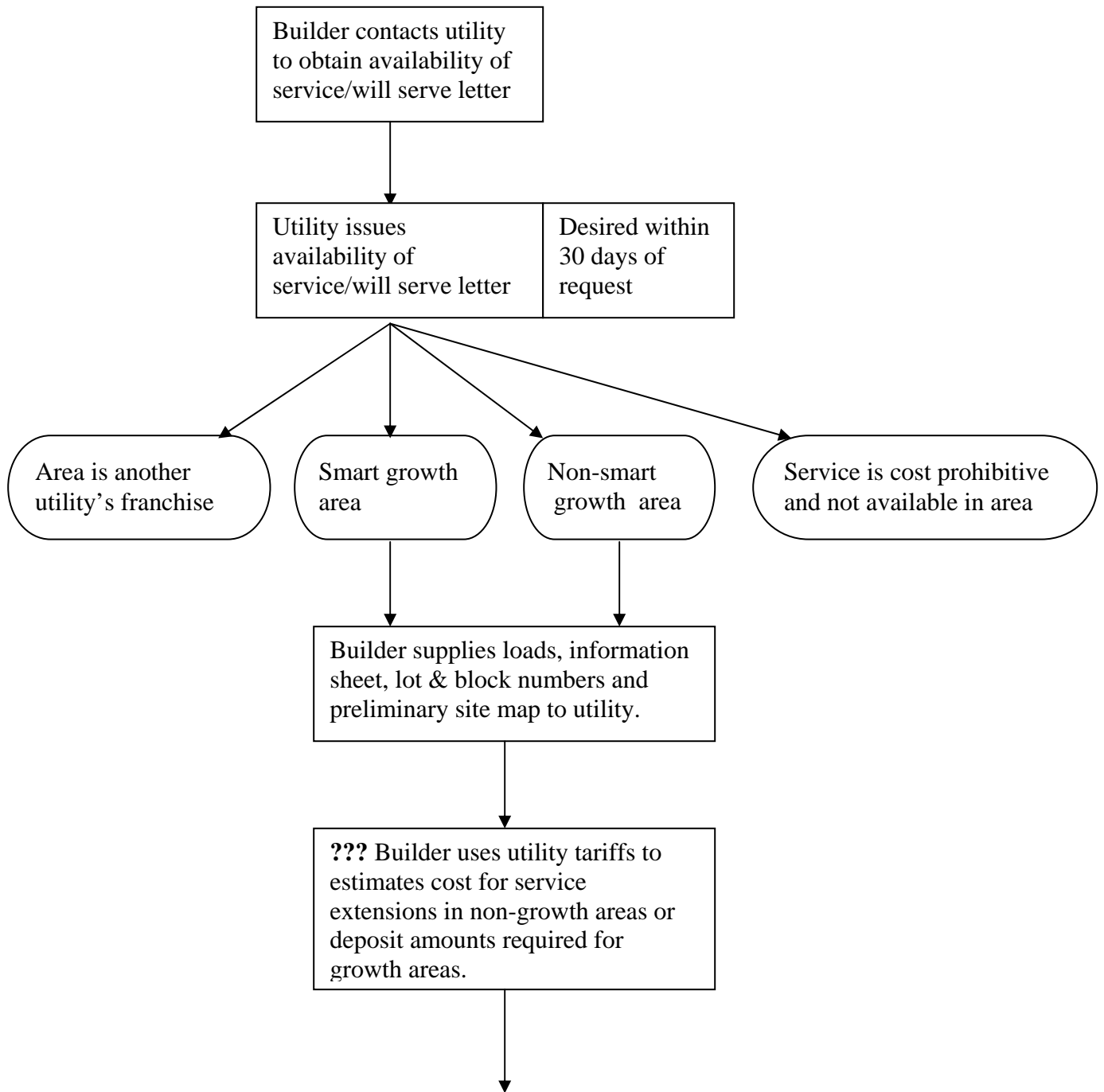
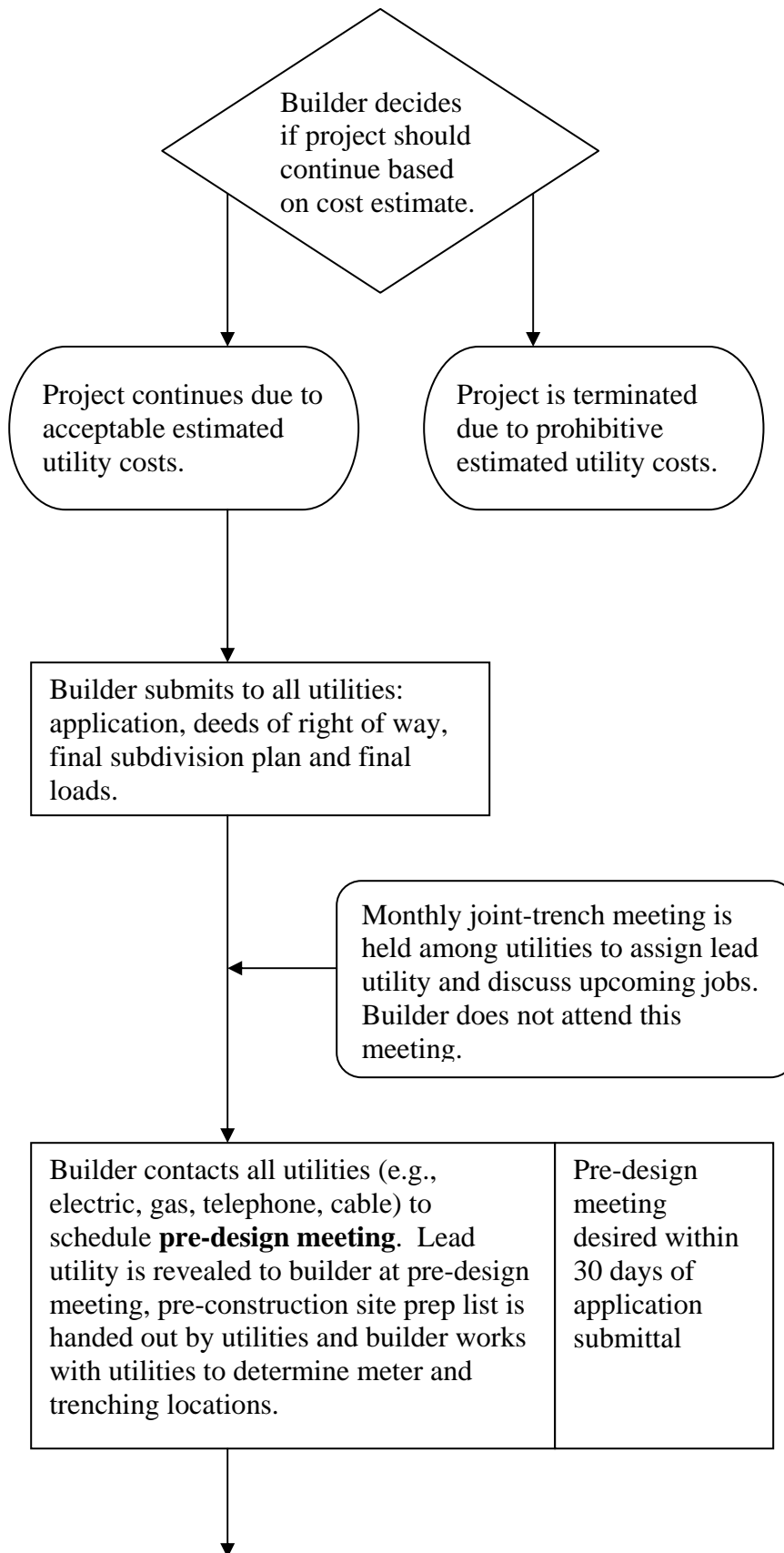
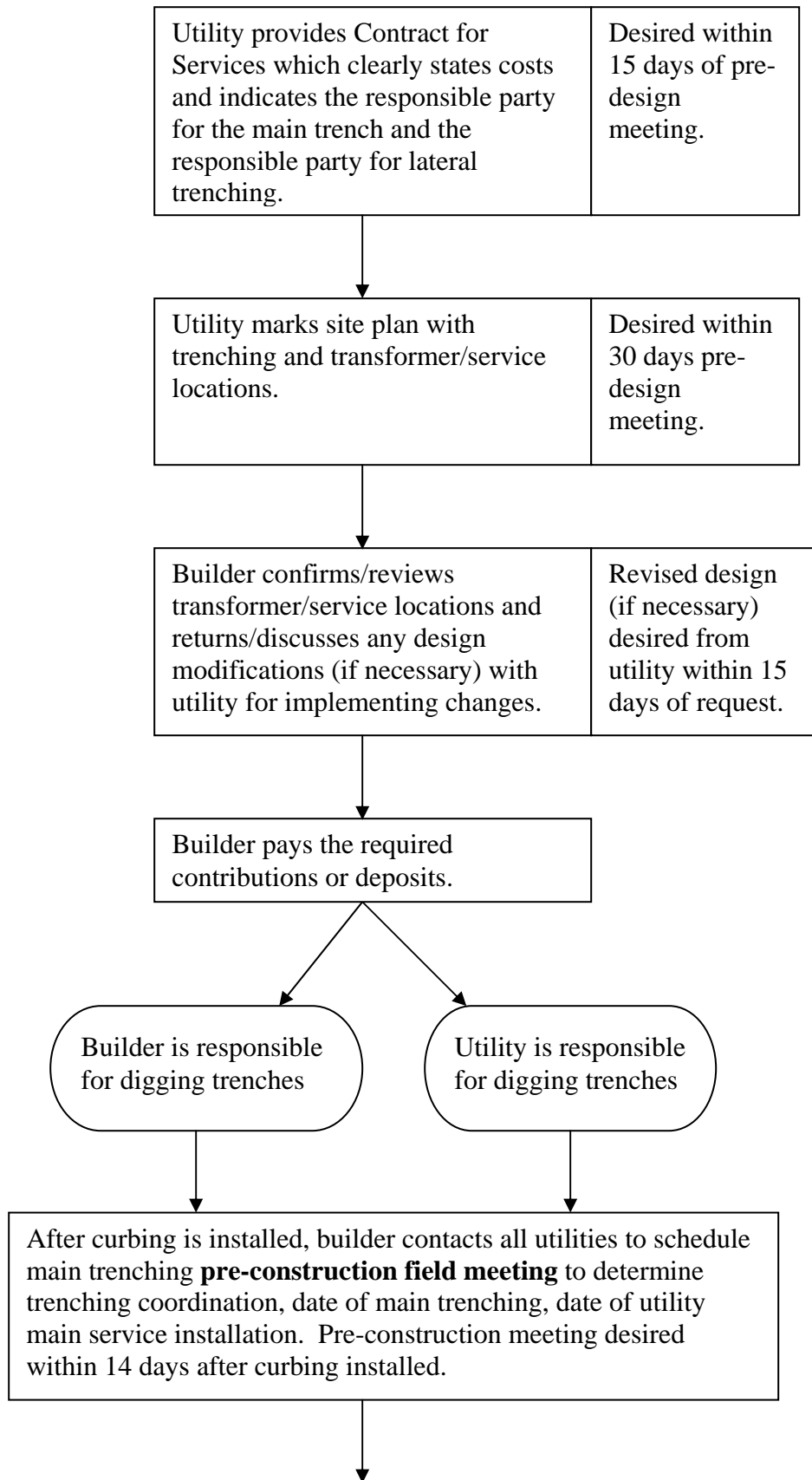


Prototypical Trenching Path

Draft: Rev. 02-14-2006







At utility option, utility representative walks site to confirm that it meets the pre-construction site prep list.



Utilities order materials for main service installation	Materials to be ordered within 3 days after scheduling the pre-construction meeting and are to arrive prior to main trenching date.
---	---



Builder contacts lead utility 7 days in advance of scheduled main trenching to confirm status. Lead utility contacts other involved utilities to confirm status.



Builder contacts lead utility 24 hours in advance of scheduled main trenching to confirm status. Lead utility contacts other involved utilities to confirm status.



Responsible party digs main trench	Desired within 30 days of preconstruction meeting.
Utility or responsible party installs main services in open main trench.	Desired within 3 days of main trench creation
Responsible party must backfill all gas utilities the same day of installation and all other services soon after installation.	



Builder supplies utility with indemnification letter and utility then installs street lights.	Desired within 30 days of main services installation
---	--



Upon structure and grade finished to a point that meets the requirements of all utilities, builder notifies lead utility that lateral trenching is ready to be dug. Date for digging of lateral trench is scheduled.



Builder contacts lead utility 24 hours in advance of scheduled lateral trenching to confirm status.



Lateral trench is dug by responsible party.	
Utilities or responsible party installs lateral services.	Desired within 3 days of lateral trench creation
Responsible party must backfill all gas utilities the same day of installation and all other services soon after installation.	



Builder's electrician installs meter pan
Builder obtains rough electrical inspection. Cut card from inspector is forwarded to utility.



Utility installs electrical meter after receipt of cut card.	Meter installation desired from utility within 10 days of receiving cut card.
--	---



Street lights not already installed need to be in place prior to closing(s). Municipal engineer or construction official determines which street lights must be operational.
--



For designated growth areas, refund of deposits should automatically be sent to builder within 60 days of meter set.